



MOTION CONTROL, AUTOMATION DISTRIBUTION AND CUSTOM ENGINEERING

Services Include Sizing, Product Selection, Engineering Design, and Programming

[Visit our G & G Technical Website here](#)

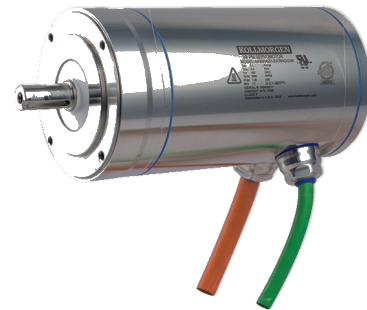
G & G Technical Washdown Solutions Servo Motors, Gearboxes, and Actuators

KOLLMORGEN[®]

Because Motion Matters™

Kollmorgen Stainless Steel AKMH Motor Series

- IP69K Certification
- No protective covers needed for washdown of motor and cable
- 316L stainless steel construction
- FDA-approved, food-grade bearing lube, O-Rings, and shaft seal
- Single cable design for increased reliability, faster cleaning, and fewer places to harbor pathogens
 - Passive venting through combined power and feedback cable
- Designed to meet EHEDG, 3A, NSF, USDA and BISSC guidelines
- Reducing the time to clean your machine and increasing reliability under severe washdown
- Available in 19 motor sizes



[Link to additional resources](#)



**Boston Gear Micron AquaTRUE
Gearboxes**

- IP66, IP67, & IP69K Certified
- Inline planetary gearbox
- 300 series stainless steel housing eliminates rust & corrosion
- Meets strict requirements of harsh environments
- Food & beverage handling, packaging & dispensing
- Round housing with no external seams
- Handles caustic cleaning chemicals & high pressure washdown

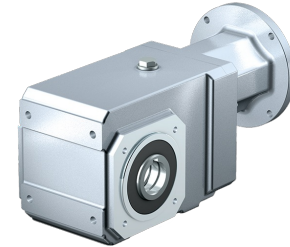


[Link to additional resources](#)



STOBER KSS Hygienic Gearboxes

- IP69K Certified to withstand the harshest washdowns
- Right angle helical bevel gearbox
- Stainless steel construction
- Design prevents harborage of bacteria and withstands harsh chemicals
- No maintenance required
- 3 year warranty



[Link to additional resources](#)



Macron Dynamics Sanitary Actuators

- Two styles of belt driven Sanitary actuator that stand up to application requiring wash down sanitation
 - MSA-SSB beam style design
 - MSA-SST tube based design
- Stainless steel construction with open design ensures the actuators are non-reactive, non-contaminating, corrosion resistant and cleanable
- Intended to provide linear motion solutions for nonfood contact use
- Most may be updated to water resistant (WR) or washdown duty(WD)
- Stainless steel guide rails, carts and pulley assemblies
- Stainless steel bearings with food grade lubricant
- Polyurethane belt with stainless steel cords
- Delrin or PEEK track guide rollers
- Dual output one-piece pulley drive shaft
- Horizontal or Vertical orientation
- Standard and Custom travel lengths available up to 2 meters

[Link to additional resources](#)